

Custom Cable. Built **Fast**. Built **Right**. Backed by **Amphenol**.

## BEAD Compliant Products

Industries we serve:



Telecom / Broadband



Data Centers / Hyperscale



Robotics / Automation



Military / Aero / Defense



Medical / High-Reliability



### GET IN TOUCH

**Western Sales:**

Danny Zambrano  
(305) 733-8841  
dzambrano@customcable.com

**Eastern Sales:**

Robert Chipman  
(678) 520-1432  
rchipman@customcable.com

**Copper/Mil-Aero:**

Dylan Rogstad  
(352) 201-2080  
drogstadt@customcable.com

#### Fiber Node Cable (FTTN)



- Fiber runs to a central node serving nearby customers.
- The node distributes signals to homes or businesses.
- Final delivery uses copper or coaxial cables.

#### Flat Drop (FTTH)



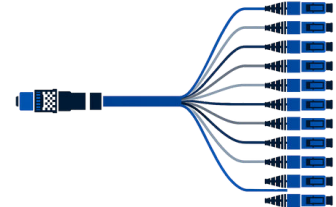
- Connects backbone fiber to user's home or building
- Small size, low fiber count, ~80m support span
- Common for overhead/pipeline use; rarely buried

#### Fiber Jumper / Fiber Patch



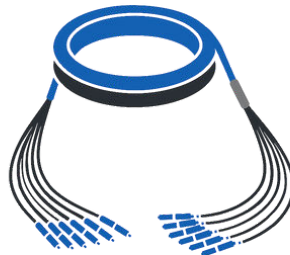
- Fiber jumper (or patch cord) = fiber cable with connectors on both ends
- Connects end devices or network hardware
- Enables quick, direct fiber connections

#### Multi-Fiber Push On (MTP/MPO) Cables; preterminated both sides



- MTP® = high-performance version of the MPO connector (by US Conec)
- MPO connectors contain multiple fibers (typically 8, 12, or 24)
- Commonly used in data centers and LAN applications

#### Fiber Trunk Cables



- Pre-terminated fiber assemblies used to link switches, servers, and panels
- Serve as backbone connections in data centers and enterprise networks
- Offer faster, cleaner installs than field-terminated cabling

